



**IT AGRI WEATHER SOLUTION  
PRIVATE LIMITED**

# IT BASED SERVICE TO FARMERS



## **JOINT VENTURE**

### IT Agri & Web Soft BD, Bangladesh

ITAGRI is working in joint venture with Web Soft BD, Bangladesh. Web Soft BD is a privately held ICT & Agrometeorology company based in USA with head office in Dhaka, Bangladesh. In the year of 2008; Web Soft BD started its journey. Certification of ISO 9001:2015, IEC 27001:2013, CMMI, IAF, APN, B-Meet, BASIS & BCS have been achieved by the company. Web Soft BD was established by a group of professionals with a desire to provide the best ICT solution in Meteorology, Agriculture, Agrometeorology, Climate, Weather, Water, Food & Environment & other sectors.



[www.websoftbd.net](http://www.websoftbd.net)



## **OUR SERVICES**

1. Agrometeorological Advisory Products & Service.
2. Pest & Disease Forewarning Based Management.
3. Installation & Maintenance of Weather Stations.
4. Development of Website/Web Portal.
5. Artificial Intelligence (AI) Based Farming Solution.
6. IT Consultancy.



## **OUR EXPERTS**

A number of high-profile experts working on agrometeorology for many years from different countries in the world are associated with IT Agri. Besides, IT Agri is establishing its footprints across the globe.



## **COMPANY MANAGEMENT**

### EXECUTIVE DIRECTORS:



Kausal Chattopadhyay



Nupur Chattopadhyay

### NON-EXECUTIVE DIRECTORS:



Dr. L.S. Rathore



Dr. Nabansu Chattopadhyay



Mr. Rajesh Mali



Mr. Narendra Singh Barhat



### **Registered Office:**

Flat no: 3F, Block no: 15, Merlin Uttara, 94/6  
K G.T. Road, Hindmotor, District. Hooghly,  
West Bengal, Pin-712233, India



**Email** : [itagrisolution@gmail.com](mailto:itagrisolution@gmail.com)  
: [info@itagri.org](mailto:info@itagri.org)



**Website** : [www.itagri.org](http://www.itagri.org)



## IT AGRI WEATHER SOLUTION PRIVATE LIMITED

### AGROMET ADVISORY

IT Agri delivers crop-wise services on land preparation, sowing/transplanting, fertiliser and pesticides application, irrigation, harvesting etc. based on weather information, weather forecast, soil, crop weather calendar, and satellite products and other associated information.



### SPECIAL ADVISORY FOR LIVESTOCK

IT Agri assists in generating "Special Bulletin for Heat Stress for Livestock and poultry farmers" from the Decision Support System (DSS) and disseminated advisory through SMS & voice messages to the farmers and local stakeholders. By implementing this service, a large number farmers are able to enhance animal production. Weather based livestock management through health, shelter and nutrition management is also provided. Such information is made more effective with sensitization/capacity building/training programme at the local level.



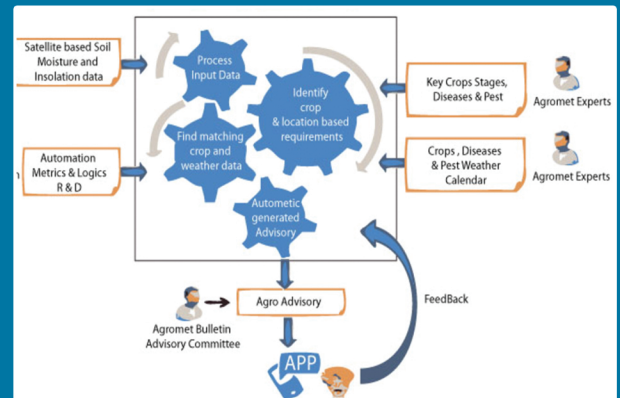
### FISHERY ADVISORY

IT Agri helps to provide fishery advisory based on temperature, oxygen level and also assists in generation of advisories for fish management under extreme weather conditions with close collaboration of the related organisations.



### AUTOMATION SOLUTION

Using the sensitivity studies between crop stages, pest and disease incidences, weather parameters and different logics, IT Agri can produce agromet advisories through automation mode.



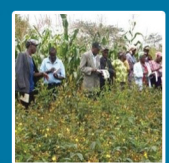
### INSTALLATION & MAINTENANCE OF WEATHER STATIONS

IT Agri is managing to install different weather stations. IT Agri has the expertise in installation and maintenance of all types of meteorological and agrometeorological instruments.



### GUIDANCE FOR WEATHER AND CLIMATE SERVICES THROUGH PARTICIPATORY APPROACH

The objective of these programmes is to make farmers become more self-reliant in dealing with weather and climate issues that affect agricultural production on their farms and to increase the interaction between the farmers and the Agrometeorological Service providing agencies. IT Agri assists in organising roving seminar, climate field school, field day, farmer club, field visit etc.





# IT AGRI WEATHER SOLUTION PRIVATE LIMITED

## IT CONSULTANCY

IT Agri provides the following IT consultancy

1. Communication of correct information about the climate and its variability and availability of information in a format that can easily be understood by small hold farmers. Information on advisories should be made location specific.
2. Modern communications in rural areas, affecting transmission of information and warnings.
3. Establish strong community networks to strengthen agrometeorological extension services for increased interpretation of weather and climate.

## ADVISORIES UNDER EXTREME WEATHER CONDITIONS

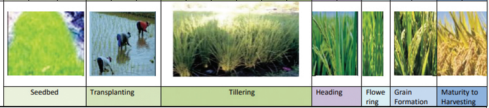
IT Agri has the capability to assist in preparation and issuing of agromet advisories to save the loss of crop, livestock, poultry and fishery under cyclone, flood, drought, heavy rainfall, heat wave, cold wave etc.. The firm also assist in preparing do and don't advisories under extreme weather conditions.



## CROP WEATHER CALENDARS

IT Agri prepares a number of agrometeorological products like Crop Weather Calendars. The Crop-Weather Calendars (CWCs) are used in agromet-advisory services. With the week as the basic time unit, the compiled information can assist forecasters in framing weather warnings and forecasts directed at farmers.

Crop Weather Calendar of Paddy Aman Rice																				
Months	Duration: 133 days																			
Week	July	August			September			October			November	December								
Mid-Week/Normal	30	32	33	34	35	36	37	38	39	40	41	42	43	44	45	46	47	48		
Rainfall (mm)	75.5	79.5	89.0	76.5	63.0	60.5	66.0	60.0	59.5	76.5	41.0	38.5	31.5	26.5	9.5	12.0	8.0	3.0	3.5	
Max. Temp. (°C)	32.1	32.1	32.1	32.0	32.4	32.5	32.1	32.3	32.8	32.8	32.7	32.7	32.4	31.7	31.0	30.1	29.5	28.5		
Min. Temp. (°C)	26.1	26.0	26.4	26.1	26.4	26.2	26.0	26.0	25.8	25.5	25.0	24.2	22.5	21.5	20.6	19.3	18.0	16.0		
Mean Temp. (°C)	29.5	29.0	29.2	29.0	29.4	29.3	29.1	29.4	29.1	28.9	28.3	27.1	26.9	25.8	25.1	24.7	23.7	22.4		
Humidity (%)	95.8	95.6	96.1	96.0	95.9	96.2	96.5	96.7	96.7	96.8	96.5	96.2	96.3	96.0	95.6	95.9	95.8	95.5		
Dewpoint (°C)	25.3	24.8	24.5	25.1	25.2	24.9	25.0	25.1	25.2	25.2	25.2	25.2	25.2	25.1	25.0	24.9	24.8	24.7		
Windiness (km/h)	85.6	85.2	85.0	85.6	84.8	84.8	85.1	85.1	84.1	83.4	83.0	81.1	79.8	77.8	76.7	74.7	73.6	72.4	71.1	
Solar (hrs)	29.0	30.0	29.5	31.0	32.5	31.5	32.0	34.5	36.0	38.0	41.5	42.5	40.5	32.5	48.5	53.5	52.5	53.5	53.0	
WSD (mm)	179	170	172	170	178	172	171	181	180	180	203	193	184	179	126	189	197	192		
WSD(km/h)	6.2	6.5	5.9	6.5	5.6	5.6	5.5	5.5	4.8	4.8	4.3	3.7	4.1	3.8	3.4	4.1	3.8	4.3	4.3	



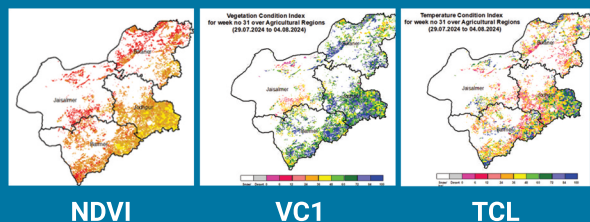
## PEST WEATHER CALENDAR & DISEASE WEATHER CALENDAR

IT Agri prepares Pest Weather Calendars & Disease Weather Calendars used in pest and disease forecasting.

Weather		>33.5°C(36 wk)											
Max. temp. (°C)		>33.5°C(36 wk)											
Morning RH (%)		>71.0%(36 wk)											
Afternoon RH (%)		>71.0%(36 wk)											
Sunshine hours		>7.4hour(36 wk)											
Total Rainfall (mm)		37.9	33.8	41.4	65.7	47.2	55.2	78.1	61.7	63			
Weekly Rainfall/known total		30.1	30.5	30.0	30.5	30.8	31.2	31.5	31.4	31.9			
normal		22.8	22.9	22.9	22.9	22.9	22.9	22.9	22.9	22.9			
Max. temp. (°C)		6.3	6.8	6.3	6.0	6.3	5.7	6.2	6.7				
Sunshine hours		94	94	94	94	95	95	95	94				
Morning RH (%)		70	67	70	67	69	64	68	67				
Afternoon RH (%)													

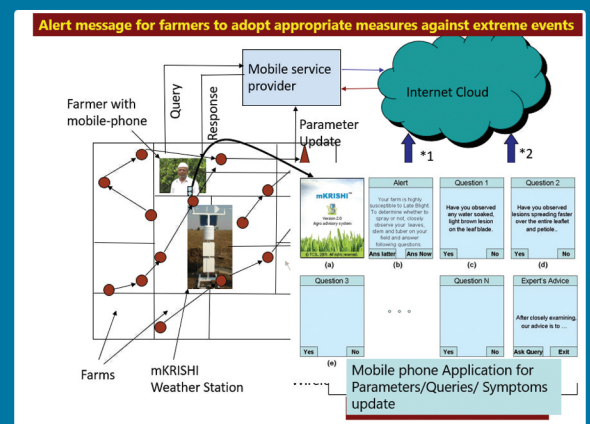
## SATELLITE BASED PRODUCT

Several satellite-derived vegetation indices, such as the Normalized Difference Vegetation Index (NDVI), Vegetation Condition Index (VCI), and Temperature Condition Index (TCI) are developed to monitor drought high resolution scale (district/block/village level). These indices help assess drought-related vegetation stress and are often validated against ground observations.



## ARTIFICIAL INTELLIGENCE SOLUTION

Artificial intelligence (AI) is a set of technologies that enable computers to perform a variety of advanced functions. IT Agri provides the solution about construction of tailored AI systems, ensuring their seamless integration across diverse agrometeorological environments.





# IT AGRI WEATHER SOLUTION PRIVATE LIMITED

## AGROMET ADVISORY SERVICE BULLETIN

During the entire life cycle of crop, livestock, poultry, fishery, weather has great impact. Farmers are usually given advise what they are supposed to do on farm operation based on weath-er parameters. IT Agri assists in issuing agrom-et advisories to the farmers on weekly, fort-nightly, monthly, and season-wise.



## OTHER SERVICES

IT Agri also provides the following services

1. Full-cycle web portal development services and help design, engineer, and support a custom web solution for business: document and prioritize requirements, choose the right tech stack and architecture, develop a web system, and integrate it into infrastructure and business process.
2. Development of dynamic web portal. Here all the information and the data are verified and translated into advisories and products avail-able to farmers.
3. Development of Agrometeorology System for institution, organisation etc.

## GALLERY

